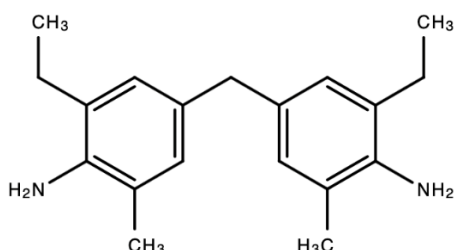




TECHNICAL DATA SHEET

HARTCURE MMEA



Description

HARTCURE MMEA is chain extender used for polyurethane elastomers. It is widely recognized for its ability to significantly enhance the mechanical and dynamic properties of various products. Well-suited for casting polyurethane (CPU), thermoplastic polyurethane (TPU), RIM elastomers and spray polyurea in the polyurethane field.

HARTCURE MMEA is also used as an intermediation for organic synthesis and a component of bismaleimides and polyimides in reinforcing material for Copper Clad Laminate application.

Physical Properties

Appearance	: Light yellow to white powder
CAS No.	: 19900-72-2
Molecular Weight (g/mol)	: 282.42
Purity (%)	: 98 min.
Melting Point (°C)	: 79 ~ 86
Moisture (%)	: 0.15 max.
Amine Value (mg KOH/g)	: 390 ~ 408
Free Aniline (%)	: 0.5 max.

Package

18 KGS/carton & 20 KGS/bag & 360 KGS/bag

Shelf Life

6 months since production date.