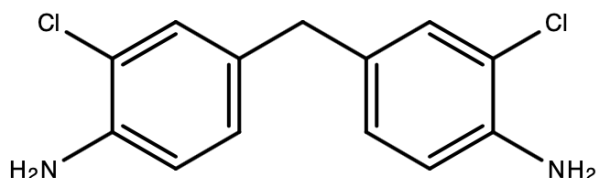




TECHNICAL DATA SHEET

HARTCURE M (MOCA)



Description

HARTCURE M, also known as MOCA, is an aromatic amine used as a chain extender/curing agent for polyurethane products or epoxy resins. It is widely applied in casting polyurethane elastomers (CPU) and reacts with pre-polymer to produce various industrial components or parts, such as rollers, wheels, shock absorption pads, oil seals, etc. The Cl atoms can slow down the activity of NH₂, extending the pot life during casting. HARTCURE M can also improve the abrasion resistance, impact resistance, and chemical resistance of CPU products, passing the thermal cycling test.

Physical Properties

Appearance	: White to light yellow granule
CAS No.	: 101-14-4
Molecular Weight (g/mol)	: 267.16
Equivalent Weight	: 133.58
Melting Point (°C)	: 98 ~ 107
Amine Value (mmol/g)	: 7.4 ~ 7.6
Specific Gravity (@24°C)	: 1.44
Specific Gravity (@107°C)	: 1.26
Purity (%)	: 99 min.

Package

25 KGS/bag & 70 KGS/fiber drum

Shelf Life

6 months since production date.